

The information on this sheet is Private and Confidential and is the property of Crane Process Flow Technologies Limited and must not be published directly or indirectly in any manner whatsoever without the written permission of the Company and must not be used in any way detrimental to their interests.
 © Crane Process Flow Technologies

CRANE Process Flow Technologies
 A Crane Co. Company

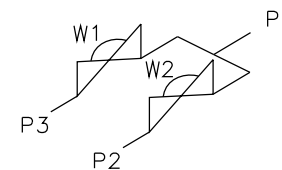
Saunders
 The Science Inside

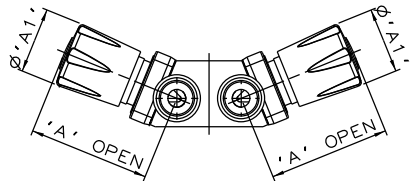
Title
 SCHEDULE OF LEADING DIMENSIONS FOR
 DN8 TO DN80 2-WAY DIVERTER
 VALVES WITH HYGIENIC CLAMP ENDS
 AND ISO 1127 S1 BORE

Drawn JRD	Date 31.05.12	UNCONTROLLED IN HARD COPY FORMAT
Checked RND	Date 06.06.13	

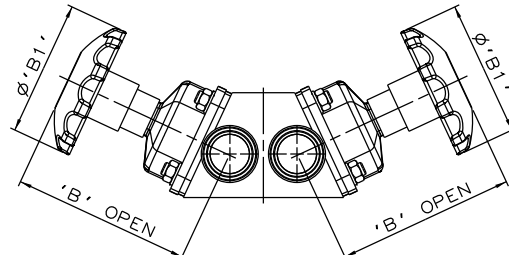
First Angle Projection Method E		DO NOT SCALE	Drawing No. WEB-201	Issue. 2
---------------------------------------	--	-----------------	------------------------	-------------

VALVE SIZE	ϕA	ϕB	ϕC	ϕD	E	F	G	H	I	J	K	L	BODY WEIGHT
mm	mm	mm	mm	mm	mm	mm	mm	mm	mm	mm	mm	DEGREES	Kgs
DN8	34.0	10.3	10.3	34.0	8.8	39.0	18.7	55.0	36.0	33.0	25.0	25	0.6
DN15	34.0	18.1	18.1	34.0	12.7	42.6	23.3	55.0	50.0	33.0	25.0	25	1.2
DN20	50.4	23.7	23.7	50.4	15.5	54.9	29.1	55.0	58.0	33.0	25.0	15	2.0
DN25	50.4	29.7	29.7	50.4	19.3	54.0	32.4	55.0	70.0	33.0	25.0	17	3.0
DN40	63.9	44.3	44.3	63.9	26.2	64.4	41.2	55.0	91.0	33.0	25.0	25	5.7
DN50	77.4	55.1	55.1	77.4	32.2	84.0	53.6	55.0	108.0	37.0	25.0	20	12.1
DN65	90.9	70.9	70.9	90.9	41.1	100.2	66.4	80.0	133.0	50.0	50.0	10	19.7
DN80	105.9	83.7	83.7	105.9	47.5	114.1	76.3	80.0	160.0	50.0	50.0	25	30.2

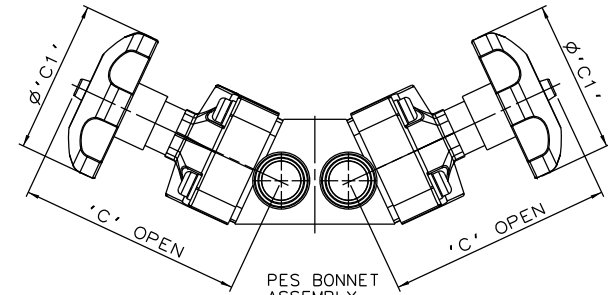




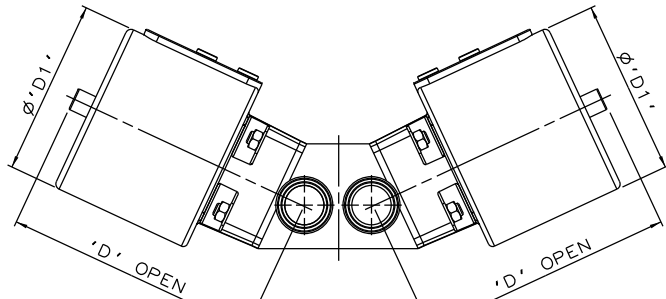
PURE PERFORMANCE BONNET ASSEMBLY



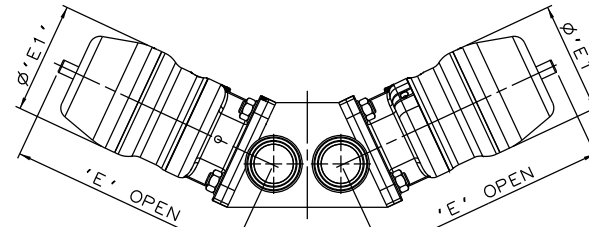
SS NON SEALED BONNET ASSEMBLY



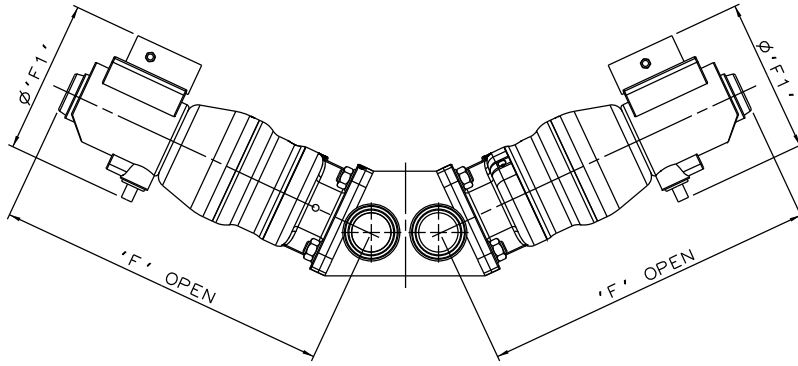
PES BONNET ASSEMBLY



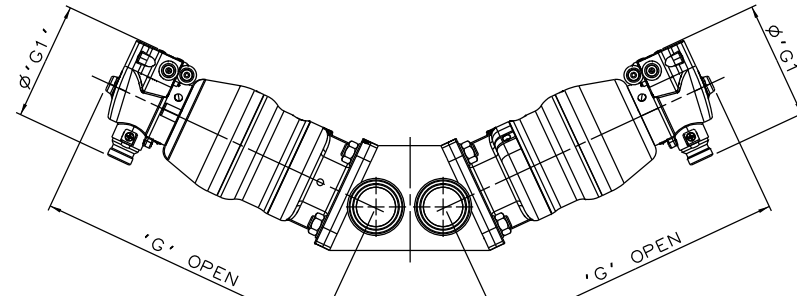
EC ACTUATOR (ALL MODES)



*S360 ACTUATOR



*S360 ACTUATOR WITH I-VUE SENSOR



*S360 ACTUATOR WITH M-VUE SENSOR

The information on this sheet is Private and Confidential and is the property of Crane Process Flow Technologies Limited and must not be published directly or indirectly in any manner whatsoever without the written permission of the Company and must not be used in any way detrimental to their interests.
 © Crane Process Flow Technologies

CRANE Process Flow Technologies
 A Crane Co. Company

Saunders
 The Science Inside

Title
 SCHEDULE OF LEADING DIMENSIONS FOR DN8/0.25 TO DN80/3.00 2-WAY DIVERTER VALVES WITH HYGIENIC CLAMP ENDS WITH ISO 1127 S1 BORE. FITTED WITH TOPWORKS OPTIONS

Drawn R1 Date 30.06.16 UNCONTROLLED IN
 Checked RND Date 30.06.16 HARD COPY FORMAT

First Angle Projection Method E DO NOT SCALE Drawing No. WEB-201-ASSY Issue. 1

* DIMENSIONS SHOW MAXIMUM ENVELOPE FOR ALL MODES

VALVE SIZE	A		A1		B		B1		C		C1		D		D1		E		E1		F		F1		G		G1		
mm	inch	mm	inch	mm	inch	mm	inch	mm	inch	mm	inch	mm	inch	mm	inch	mm	inch	mm	inch	mm	inch	mm	inch	mm	inch	mm	inch	mm	inch
DN8	0.25	65.2	2.57	34.0	1.34	N/A	N/A	N/A	N/A	N/A	N/A	N/A	N/A	N/A	N/A	N/A	N/A	88.8	3.50	55.0	2.18	187.8	7.39	136.0	5.35	153.8	6.06	103.8	4.09
DN15	0.50	N/A	N/A	N/A	N/A	87.7	3.45	62.0	2.44	110.7	4.36	62.0	2.44	114.7	4.52	70.0	2.75	138.7	5.46	67.5	2.66	234.7	9.24	136.0	5.35	199.0	7.83	103.8	4.09
DN20	0.75	N/A	N/A	N/A	N/A	90.5	3.56	62.0	2.44	116.5	4.59	62.0	2.44	159.5	6.28	103.0	4.05	166.5	6.56	98.0	3.87	262.5	10.33	136.0	5.35	227.5	8.96	103.8	4.09
DN25	1.00	N/A	N/A	N/A	N/A	113.3	4.46	80.0	3.15	147.3	5.80	80.0	3.15	167.3	6.59	103.0	4.05	175.3	6.90	98.0	3.87	272.3	10.72	136.0	5.35	236.3	9.30	103.8	4.09
DN40	1.50	N/A	N/A	N/A	N/A	162.2	6.39	120.0	4.72	203.2	8.00	140.0	5.51	229.2	9.02	155.0	6.10	228.2	8.98	123.0	4.84	315.2	12.41	136.0	5.35	279.2	10.99	103.8	4.09
DN50	2.00	N/A	N/A	N/A	N/A	184.2	7.25	120.0	4.72	213.2	8.39	140.0	5.51	248.2	9.77	155.0	6.10	271.2	10.68	150.0	5.92	355.2	13.98	136.0	5.35	319.2	12.57	103.8	4.09
DN65	2.50	N/A	N/A	N/A	N/A	234.1	9.22	170.0	6.69	227.1	8.94	140.0	5.51	N/A	N/A	N/A	N/A	335.1	13.19	186.0	7.32	415.1	16.34	136.0	5.35	N/A	N/A	N/A	N/A
DN80	3.00	N/A	N/A	N/A	N/A	258.5	10.18	230.0	9.06	298.5	11.75	250.0	9.84	N/A	N/A	N/A	N/A	406.5	16.00	236.0	9.29	479.5	18.88	136.0	5.35	N/A	N/A	N/A	N/A